



Echo court, Northolt Road, Harrow, HA2 0FU

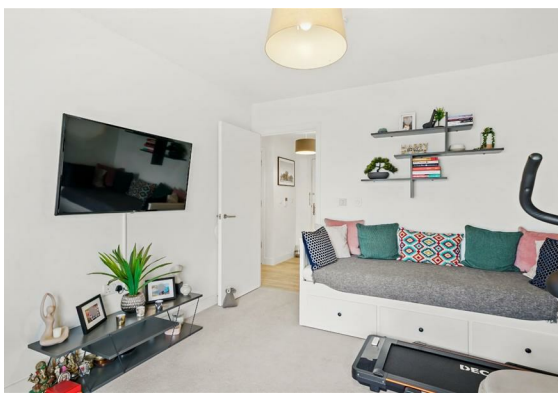
Asking Price £435,000



## Echo court, Northolt Road, Harrow, HA2 0FU

This stunning penthouse apartment comes with two bathrooms, one of which is an ensuite to the master and is just four years old in build. Measuring in at over 800 square feet the property has been beautifully dressed and maintained and boasts a substantial balcony with panoramic views of the skyline. There is also allocated underground parking.

- Top Floor Apartment
- Two Double Bedrooms
- Open Plan Reception Room
- Fitted Kitchen
- Modern Bathroom & En-Suite
- Two Purpose Built Storage Cupboards
- Private Balcony With Panoramic Views
- Communal Garden
- Secure Allocated Underground Parking Space
- Close To Station



**Council Tax Band: D**

Leasehold



## INTERNALLY

This is a well presented two double bedroom top floor (seventh) apartment. The front door leads into hallway with video entry phone system and doors leading off into a part tiled modern bathroom comprising of a panelled enclosed bath with shower unit and screen, hand basin, wc with concealed cistern, heated towel rail and large mirror. Two double bedrooms, the master bedrooms has built in wardrobes and benefits from a en-suite comprising of a walk in shower, wall hung hand basin, wc with concealed cistern and heated towel rail. The spacious open plan reception/ kitchen is bright and airy with floor to ceiling windows allowing in plenty of natural light. There is a door providing access to a private balcony. The fitted kitchen has matching wall and base units, undermount stainless steel sinks, electric hob with splash back and extractor fan over, built in Zanussi oven, dishwasher and integrated fridge freezer. The property also benefits from double glazing, underfloor heating throughout and two storage cupboards.

## EXTERNALLY

Large private balcony with panoramic views and communal gardens. The apartment comes with a secure allocated parking space.

## LOCATION

Echo Court is located within a minutes' walk to South Harrow's Piccadilly Line Tube and Bus Station and Northolt Park Station is just 0.7 miles away. Local shops and amenities along Northolt Road include South Harrow market, a number of restaurants, Waitrose, Iceland and Aldi. Bus services providing access to many localities run along the Northolt Road. A number of local schools include Roxeth Mead School and The Welldon Park Academy both 0.4 miles away, Orley Farm School and The John Lyon School both 0.5 miles away, Whitmore High School 0.7 miles away and St Dominic's Sixth Form College is 0.8 miles away.

## ADDITIONAL INFORMATION

Council Tax Band D - £2,162.80  
Leasehold 248 years remaining  
Service Charge - £1,840.89 per annum  
Ground Rent - £400.00 per annum



## Floor Plan



## Viewing

Please contact our David Conway & Co Ltd Office on 02084225222 if you wish to arrange a viewing appointment for this property or require further information.

These particulars, whilst believed to be accurate are set out as a general outline only for guidance and do not constitute any part of an offer or contract. Intending purchasers should not rely on them as statements of representation of fact, but must satisfy themselves by inspection or otherwise as to their accuracy. No person in this firms employment has the authority to make or give any representation or warranty in respect of the property.

269 Northolt Road, Harrow, Middlesex, HA2 8HS  
Tel: 02084225222 Email: sales@davidconway.co.uk <https://www.davidconway.co.uk/>

## Area Map



## Energy Efficiency Graph

